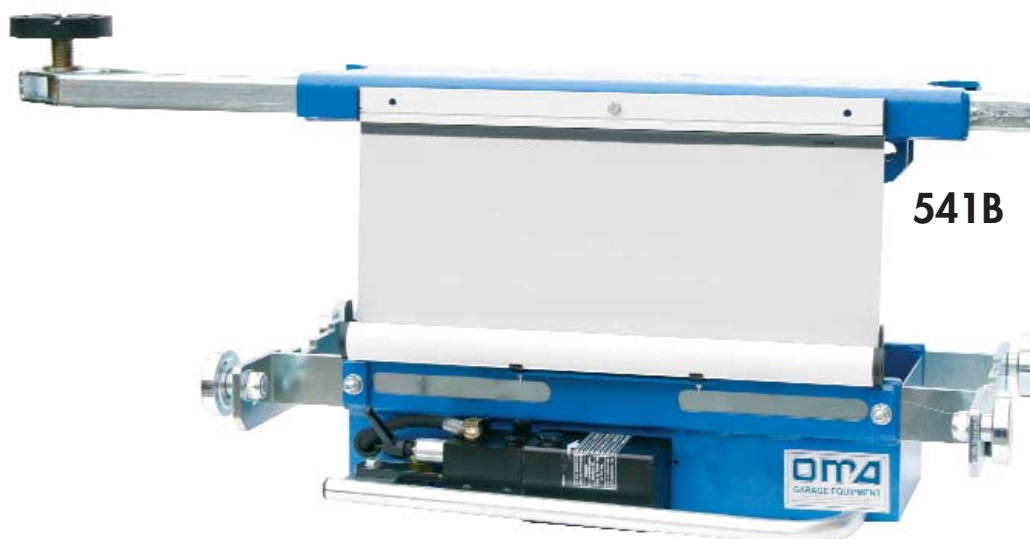


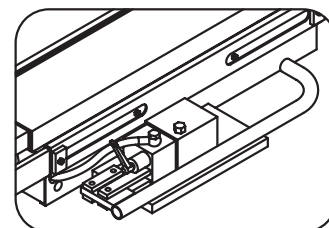
## TRAVERSA IDRAULICA A PANTOGRAFO RIBASSATA CON POMPA MANUALE/PNEUMATICA HYDRAULIC LOW PROFILE JACKING BEAM WITH MANUAL PUMP/PNEUMATIC

**541B** Traversa idraulica a pantografo ribassata con pompa manuale a semplice effetto  
 Traverse hydraulique surbaissé à ciseaux avec pompe manuelle simple effet  
 Hydraulic low profile jacking beam with manual simple action pump  
 Hydraulische Tiefer gelegte Hubtraverse mit Handpumpe einfachwirkende Pumpe

**541BA** Traversa idraulica a pantografo ribassata con pompa pneumatica  
 Traverse hydraulique surbaissé à ciseaux avec pompe pneumatique  
 Hydraulic low profile jacking beam with pneumatic pump  
 Hydraulische Tiefer gelegte Hubtraverse mit pneumatischer Pumpe



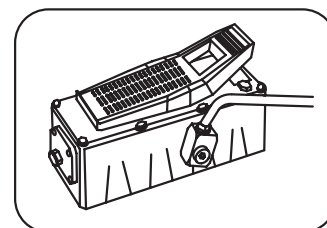
**541B**



Pompa manuale/Pompe manuelle  
Manual pump/Handpumpe

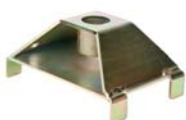


**541BA**



Pompa pneumatica/Pompe pneumatique  
Pneumatic pump/Pneumatischer Pumpe

### OPTIONAL



V542.2 H = 85 ÷ 115 mm N° 2 pz.

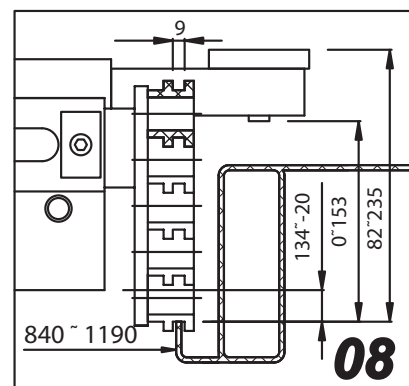
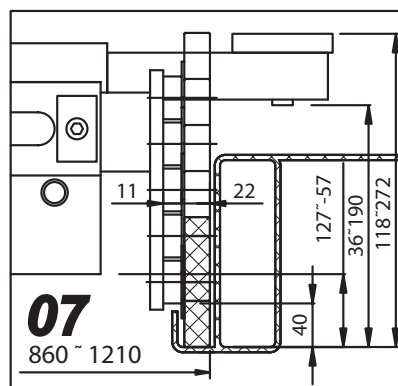
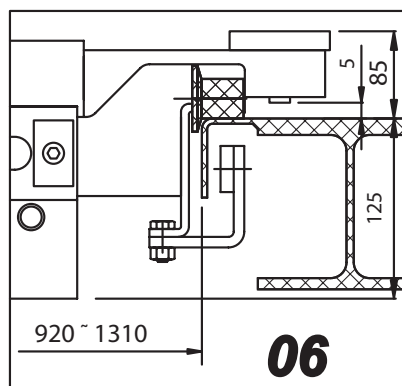
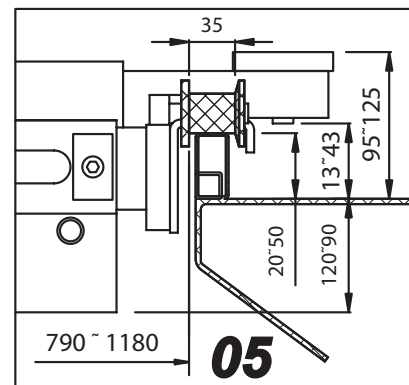
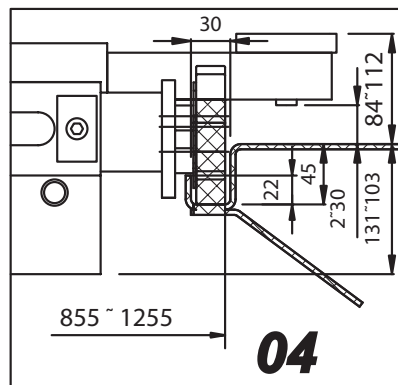
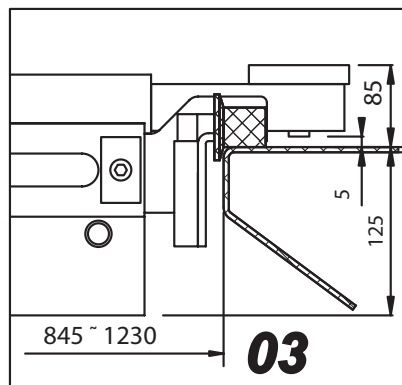
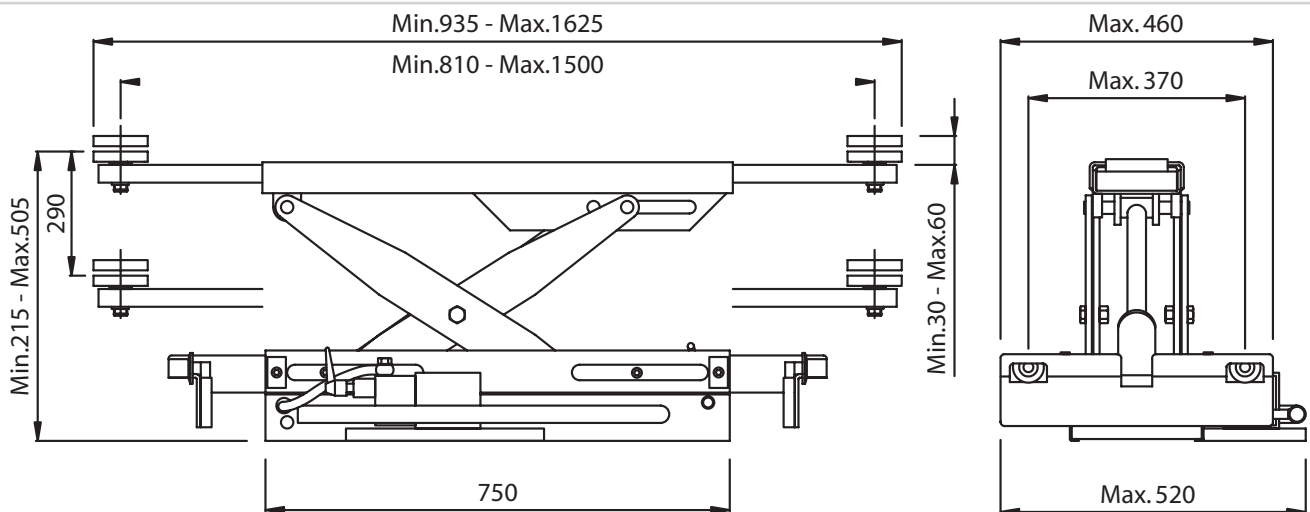


V542.1 H = 60 N° 2 pz.  
V542.6 H = 100 N° 2 pz.



V542.3 PAD H = 35 120x80 mm N° 2 pz.  
V542.4 PAD H = 50 120x80 mm N° 2 pz.  
V542.5 PAD H = 80 160x120 mm N° 2 pz.

- Comando discesa ad "uomo presente"
- Bracci telescopici
- Sicurezza idraulica in caso di sovraccarico
- Sicurezza idraulica in caso di rottura dei tubi
- Tamponi in gomma registrabili
- Stelo cromato
- "Dead man" controls
- Telescopic arms
- Safety-valve against overloading
- Safety-valve accidental breakage of feeling pipes
- Rubber blocks
- Chrom-plated rod
- Totmannknopf-Betätigung
- Teleskoparme
- UL-Sicherheitsventil
- SB-Sicherheitsventil
- Gummiklötze
- Verchromte Pratze
- Commande type "homme mort"
- Bras télescopiques
- Sécurité hydraulique en cas de surcharge
- Sécurité hydraulique en cas de rupture de tuyauterie
- Tampons en caoutchouc
- Tige chromée



Rullo/Galet/Roller/Rolle

Sollevatore/Pont Èlèvateur/Lift/Säulen

DATI TECNICI	DONNEES TECHNIQUES	TECHNICAL DATES	TECHNISCHE DATEN	541B/541BA	
Portata	Capacité	Capacity	Tragfähigkeit	t	1.6
Spostamento verticale carico	Déplacement vertical de la charge	Lifting displacement	Hubhöhe	mm	300
Estensione min (bracci chiusi)	Extension min (bras fermés)	Min. extension (arms retracted)	Min Aufnahmebreit armr voll eingefahren	mm	935
Estensione max (bracci aperti)	Extension max (bras ouverts)	Max. extension (arms extracted)	Max Aufnahmebreit armr voll ausgefahren	mm	1620
Passo delle ruote di scorrimento min.	Ecartement des roues de écoulement min.	Wheel base min.	Achsabstand der Laufrollen min	mm	790÷920
Passo delle ruote di scorrimento max	Ecartement des roues de écoulement max.	Wheel base max.	Achsabstand der Laufrollen max	mm	1180÷1310
Peso della traversa	Poids	Weight	Gewicht	kg	105
Temperatura di funzionamento	Température d'opération	Operative temperature	Betriebstemperatur	°C	-10 +40